

VISUAL
APPROACH
CHART - ICAO

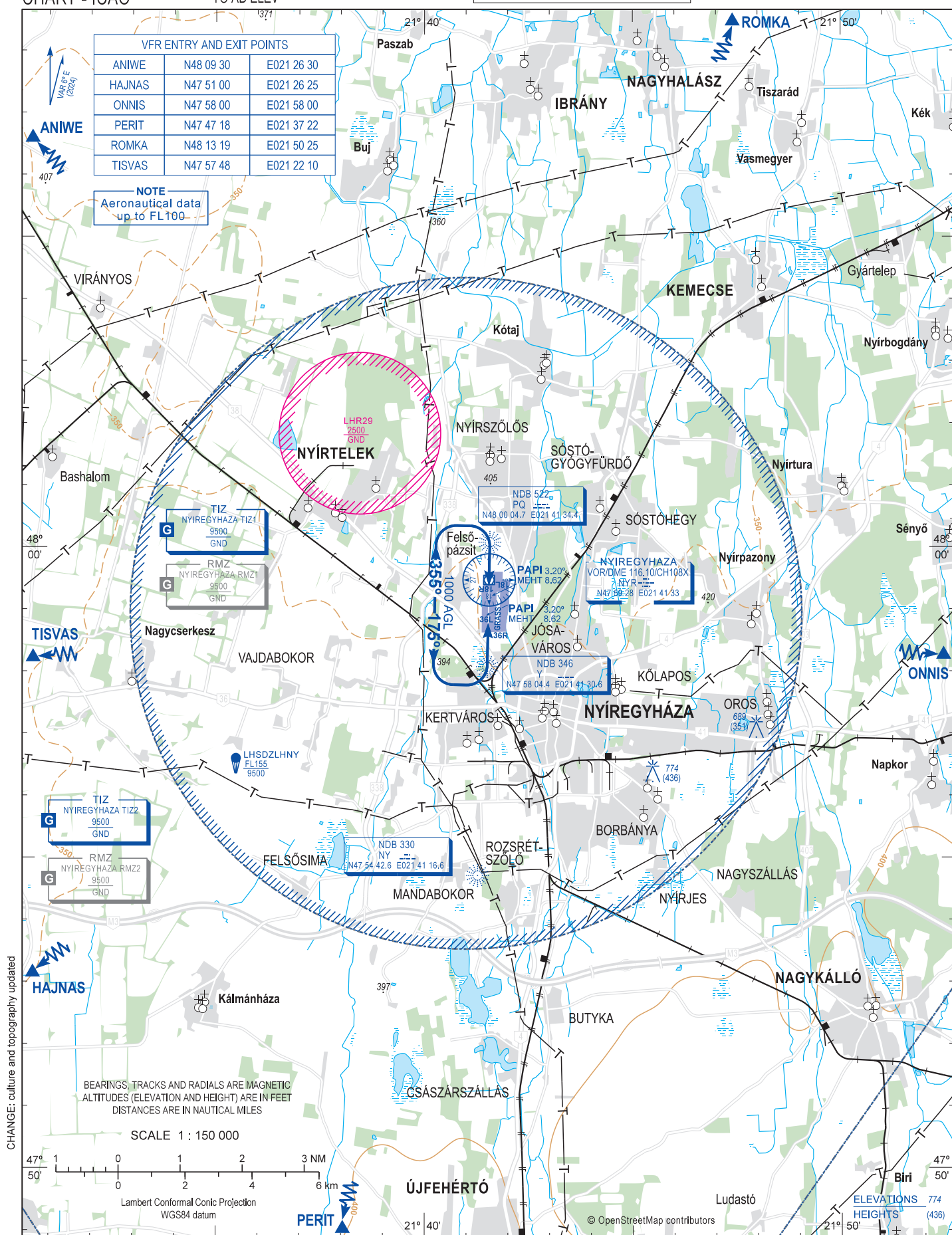
AERODROME ELEV 338
HEIGHTS RELATED
TO AD ELEV

| | |
|-----------------------------|---------|
| NYIREGYHAZA INFO | 119.410 |
| BUDAPEST INFORMATION (EAST) | 133.000 |

NYÍREGYHÁZA

| VFR ENTRY AND EXIT POINTS | | |
|---------------------------|-----------|------------|
| ANIWE | N48 09 30 | E021 26 30 |
| HAJNAS | N47 51 00 | E021 26 25 |
| ONNIS | N47 58 00 | E021 58 00 |
| PERIT | N47 47 18 | E021 37 22 |
| ROMKA | N48 13 19 | E021 50 25 |
| TISVAS | N47 57 48 | E021 22 10 |

NOTE
Aeronautical data
up to FL100



THIS PAGE IS INTENTIONALLY LEFT BLANK